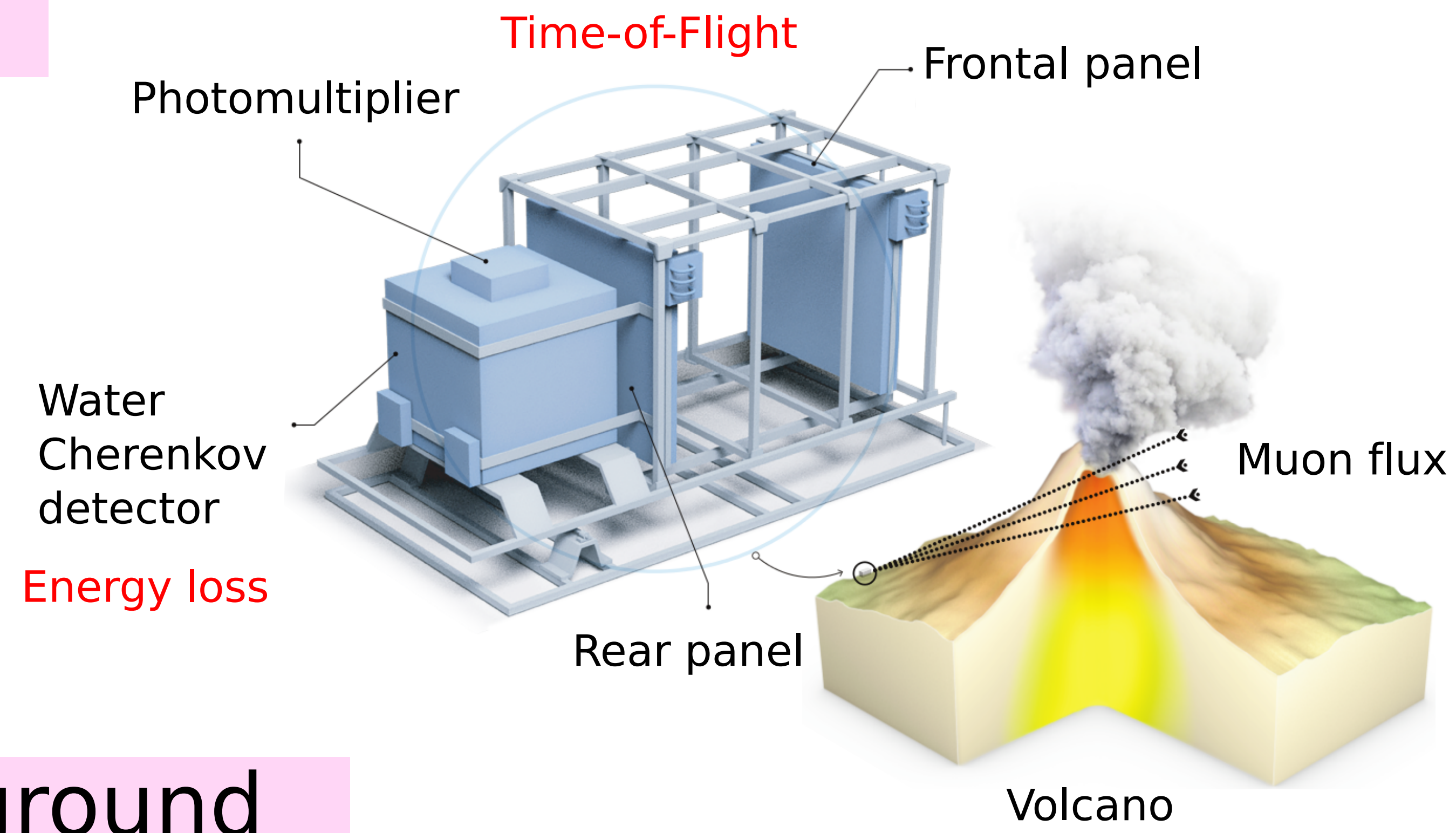


# Muography background sources: simulation, characterization, and machine-learning rejection

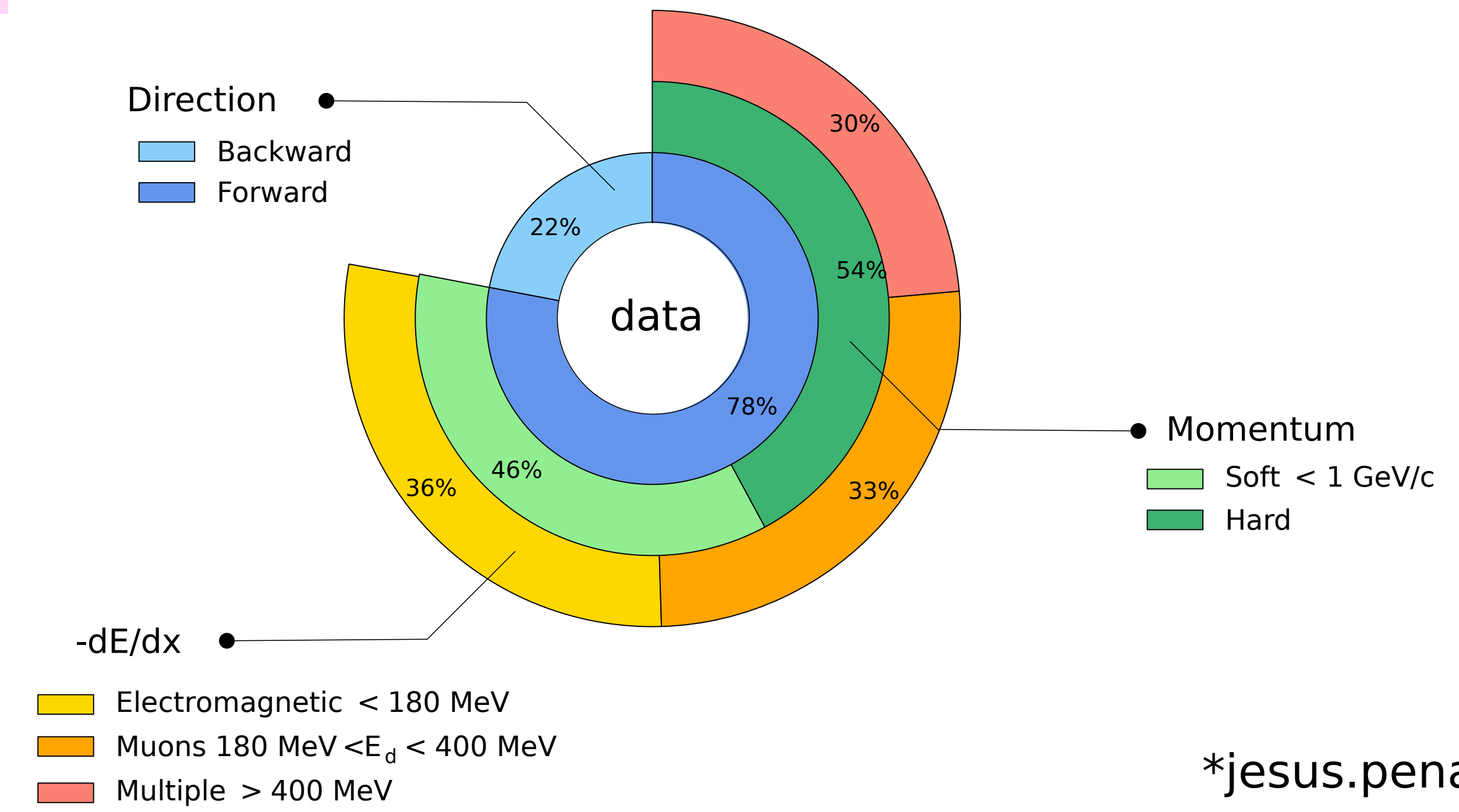
J. Peña-Rodríguez\*, R. de León-Barrios, A. Ramírez-Muñoz, D. Villabona-Ardila, M. Suárez-Durán, A. Vásquez-Ramírez, L. A. Núñez, and H. Asorey

## MuTe



## Results

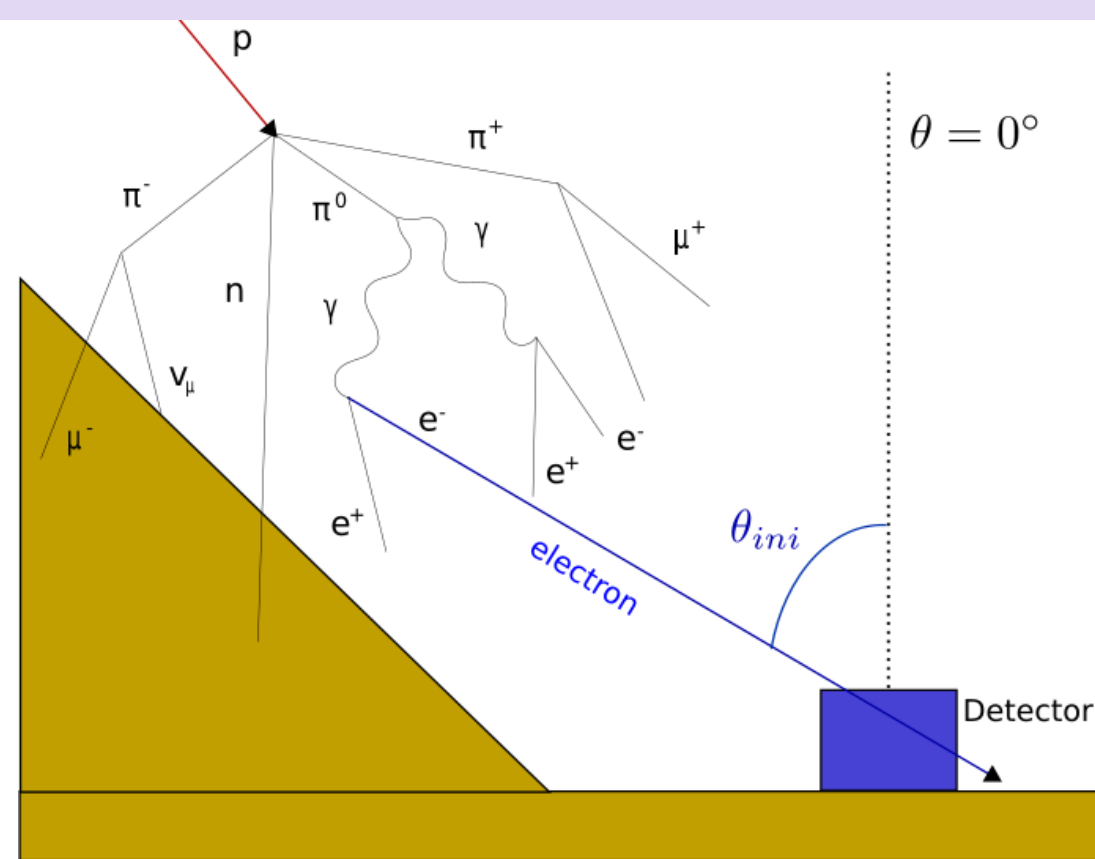
Particle flux crossing through the MuTe



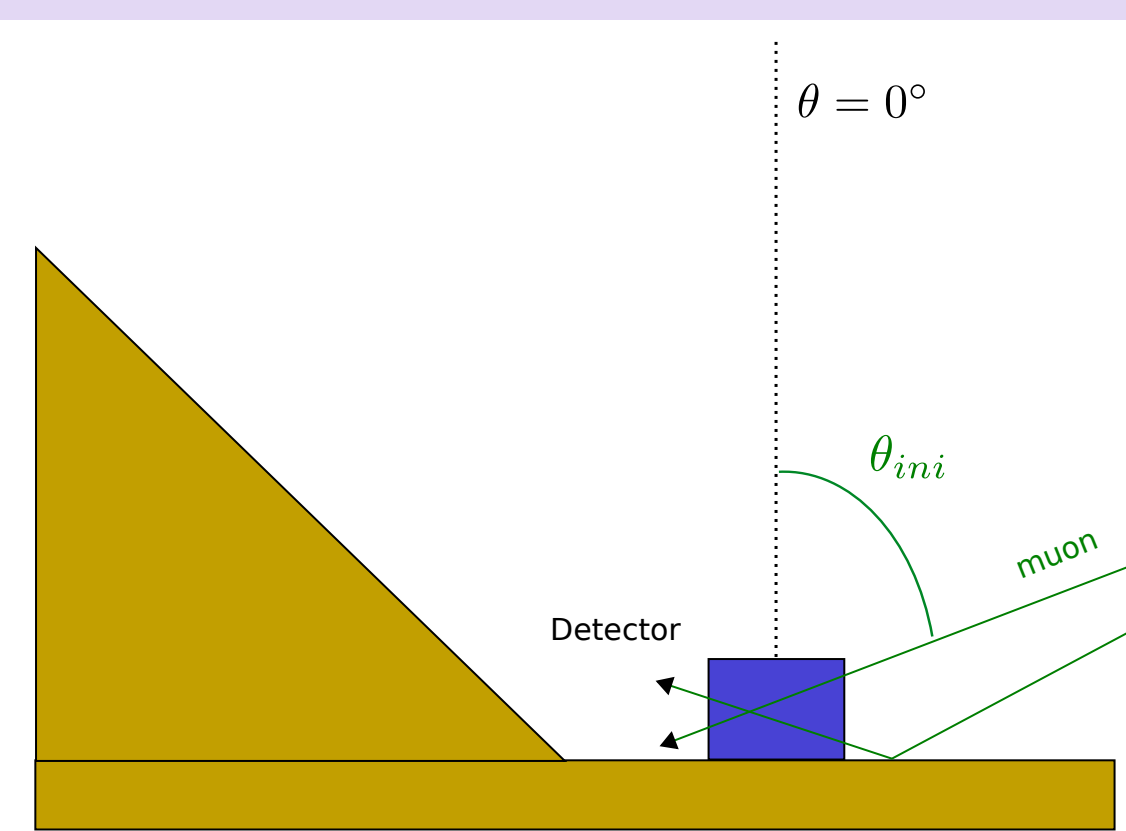
## Background

\*jesus.pena@correo.uis.edu.co

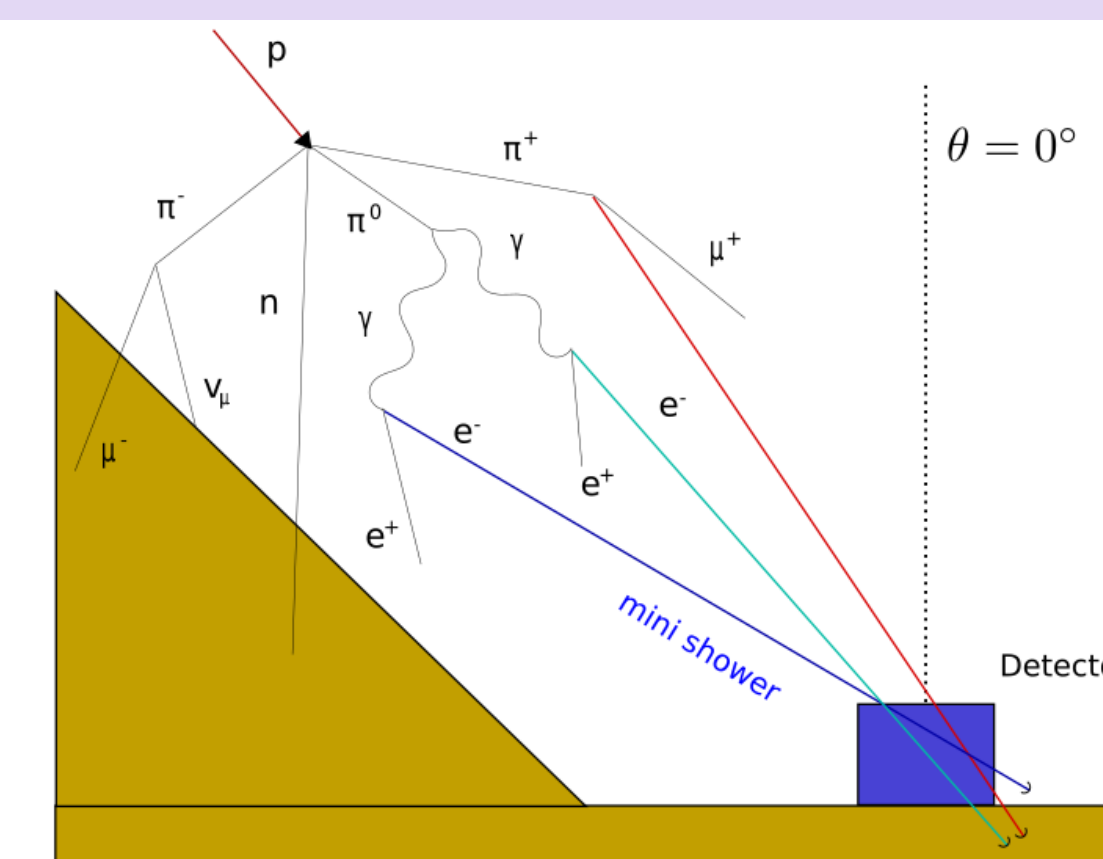
### EAS soft-component



### Inverse trajectory particles



### Multiple-particle



### Muon forward scattering

