

# Neutrino Target-of-Opportunity Observations with Space-based and Suborbital Optical Cherenkov Detectors

**T. M. Venters<sup>1</sup>, M. H. Reno<sup>2</sup>, and J. F. Krizmanic<sup>1,3</sup>**

**for the JEM-EUSO and POEMMA Collaborations**

**<sup>1</sup>NASA Goddard Space Flight Center, <sup>2</sup>University of Iowa, <sup>3</sup>UMBC/CRESST**

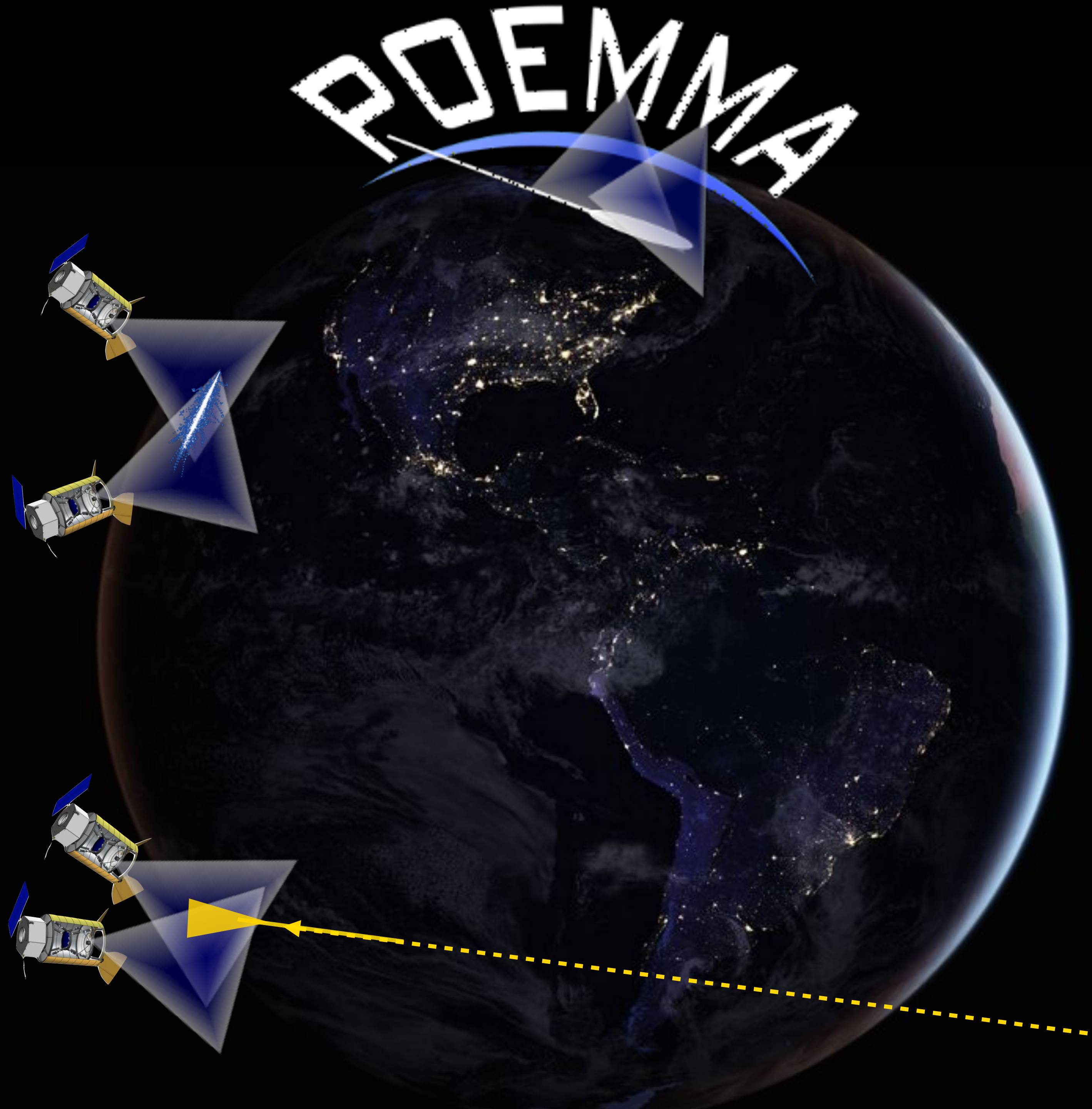
# POEMMA

## *Probe of Extreme Multi-Messenger Astrophysics*

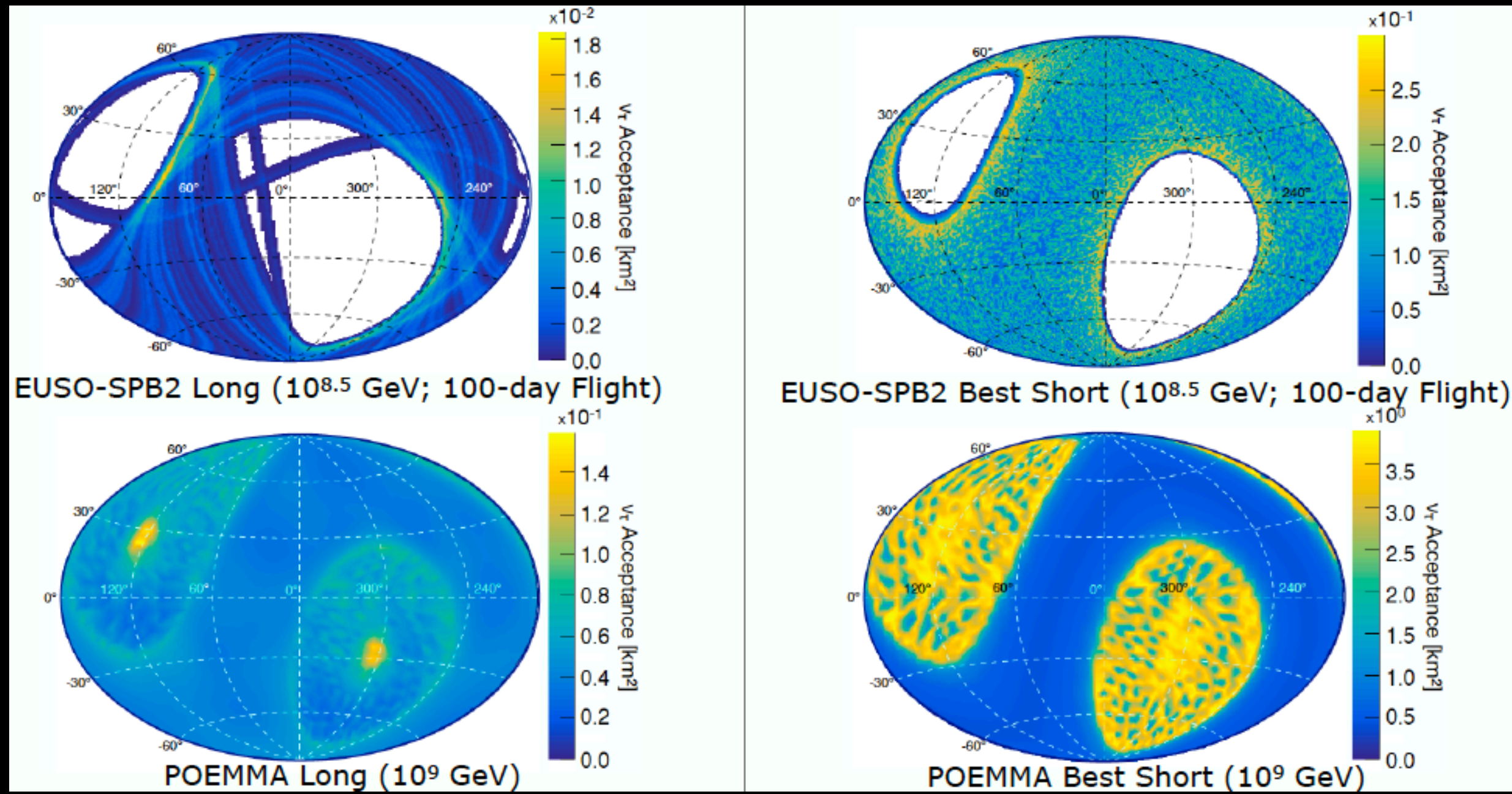
A NASA probe-class mission to perform transformational measurements of UHECRs and cosmic neutrinos.

### Select Specifications:

- EAS detection via fluorescence and Cherenkov
- Mission Lifetime: 3 years (5 year goal)
- Orbit: 525 km, 28.5° inclination,  $T_{\text{orb}} = 95$  mins.
- Field of view: 30° × 9°
- Slew Rate: 90° in 8 mins.
- Slew + Orbit + FoV → ~ 21%/37% of sky accessible in 500 s/1000 s

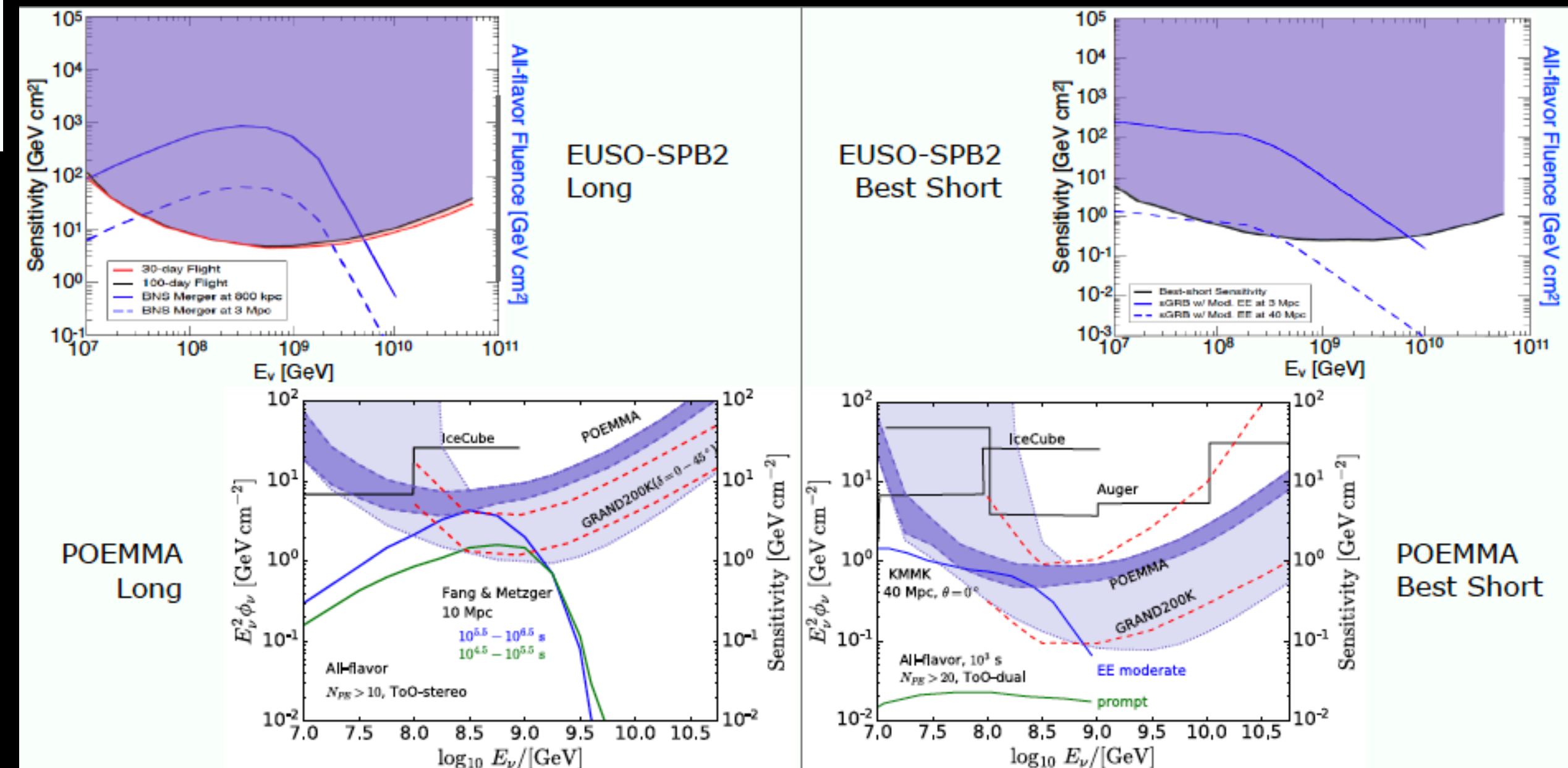


# Sun and Moon Effects



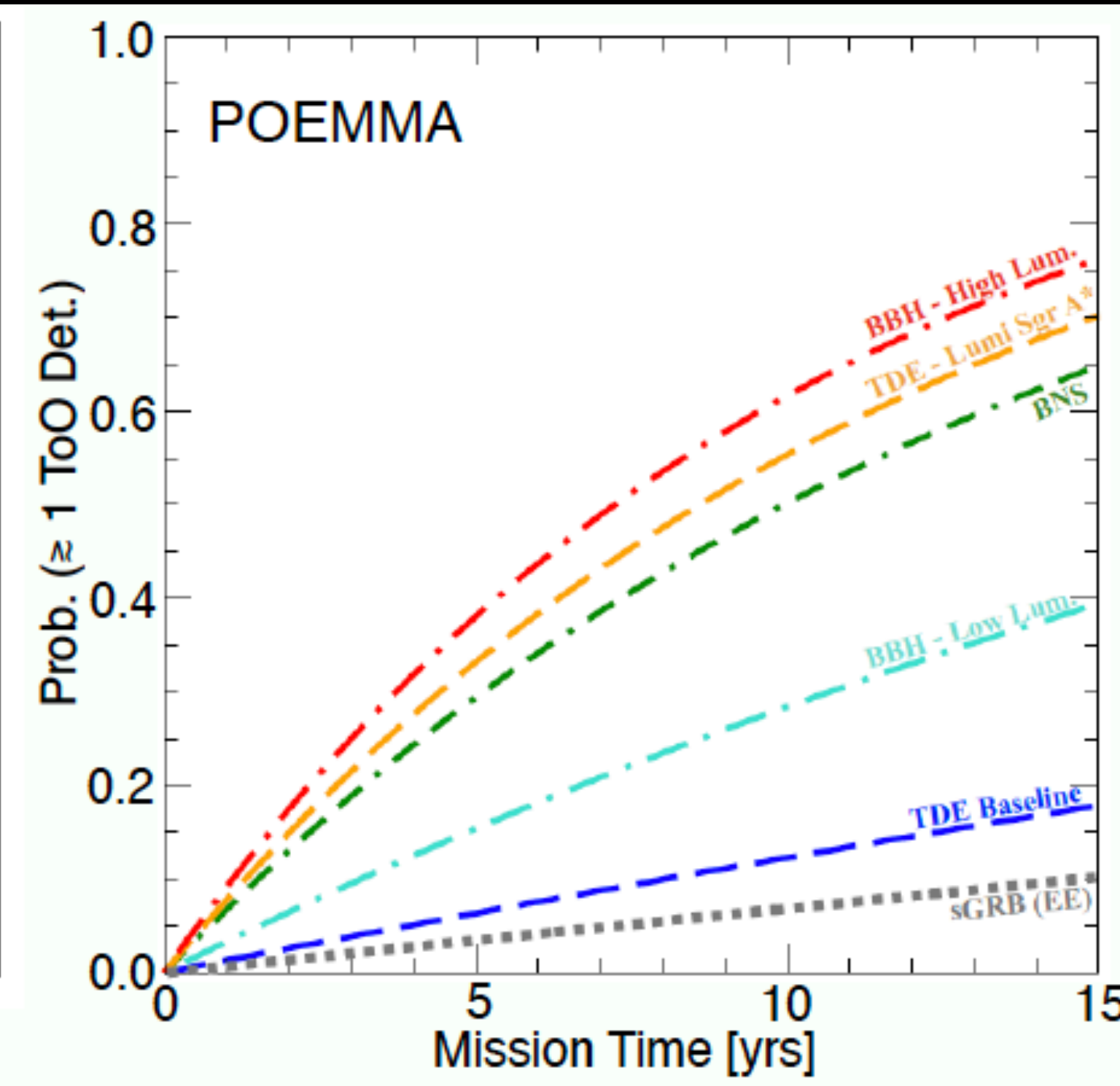
Sky Coverage

## Transient Sensitivity



# Prospects for ToO Detection

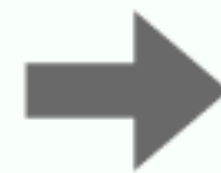
Source Class	EUSO-SPB2 $\nu$ Horizon Distance	POEMMA $\nu$ Horizon Distance	Model Reference
TDE $M_{\text{SMBH}} = 5 \times 10^6 M_{\odot}$	9 Mpc	128 Mpc	Lunardini & Winter (2017)
TDE Base Scenario	4.5 Mpc	69 Mpc	Lunardini & Winter (2017)
BBH merger – Low Fluence	6 Mpc	43 Mpc	Kotera & Silk (2016)
BBH merger – High Fluence	19 Mpc	137 Mpc	Kotera & Silk (2016)
BNS merger	2.3 Mpc	16 Mpc	Fang & Metzger (2017)
sGRB w/ Mod. Extended Emission	25 Mpc	90 Mpc	Kimura et al. (2017)



Horizon Distances for  
Detecting at Least 1 Neutrino



Cosmol. Event Rate



Poisson Detection Probabilities  
Over Mission Lifetime

# Neutrino Target-of-Opportunity Observations with Space-based and Suborbital Optical Cherenkov Detectors

T. M. Venters<sup>1</sup>, M. H. Reno<sup>2</sup>, J. F. Krizmanic<sup>1,3</sup> on behalf of the JEM-EUSO and POEMMA Collaborations



## Background

- Many candidate astrophysical neutrino sources associated with transient events
- Space and suborbital Cherenkov expts. detect up-going  $\nu_\tau$  air showers:
  - $\nu_\tau$  enters Earth  $\rightarrow$  charged current interaction  $\rightarrow$   $\tau$  emerges from ground  $\rightarrow$   $\tau$  decays  $\rightarrow$  air shower  $\rightarrow$  Cherenkov signal
- In space:  $T_{\text{orb}}$  ( $\sim 95$ mins.) + slewing  $\rightarrow$  Access to large parts of sky
  - Space missions uniquely suited for transient follow-up
- POEMMA is a proposed space-based mission featuring an optical Cherenkov camera for detecting very-high energy neutrinos.
- EUSO-SPB2 is a balloon-borne experiment and is a pathfinder mission for POEMMA.
  - Launch expected in Spring 2023 from Wanaka, New Zealand.

## Method

### Scenarios

#### Long Burst

- Event duration  $\geq 1$  day
- POEMMA satellite separation  $\sim 50$  km (lower E threshold)
- duty cycle ( $f$ ) determined by Sun and Moon constraints

#### Short Burst

- Event duration  $\sim 1000$  sec.
- POEMMA satellite separation  $\sim 300$  km (higher E threshold)
  - Satellites observe indep.
- Ignoring Sun and Moon ( $f = 1$ )
- Assume best-case scenario:
  - Source dips below limb at  $\xi_0$

### Calculations

Instantaneous Acceptance:

$$A(\alpha(\theta), E_\nu) = \int dP_{\text{obs}}(E_\nu, \beta, r) A_{\text{Ch}}(\alpha)$$

Average over Observ. Time:

$$\langle A(E_\nu) \rangle_{T_{\text{obs}}} = \frac{1}{T_{\text{obs}}} \int_{\xi_0}^{\xi_0+T_{\text{obs}}} A(\alpha(\theta), E_\nu) dt$$

All-flavor Sensitivity:

$$\frac{2.44}{\ln(10)} \times \frac{(N_f - 3) E_\nu}{f(A(E_\nu))_{T_{\text{obs}}}}$$

Number Events:

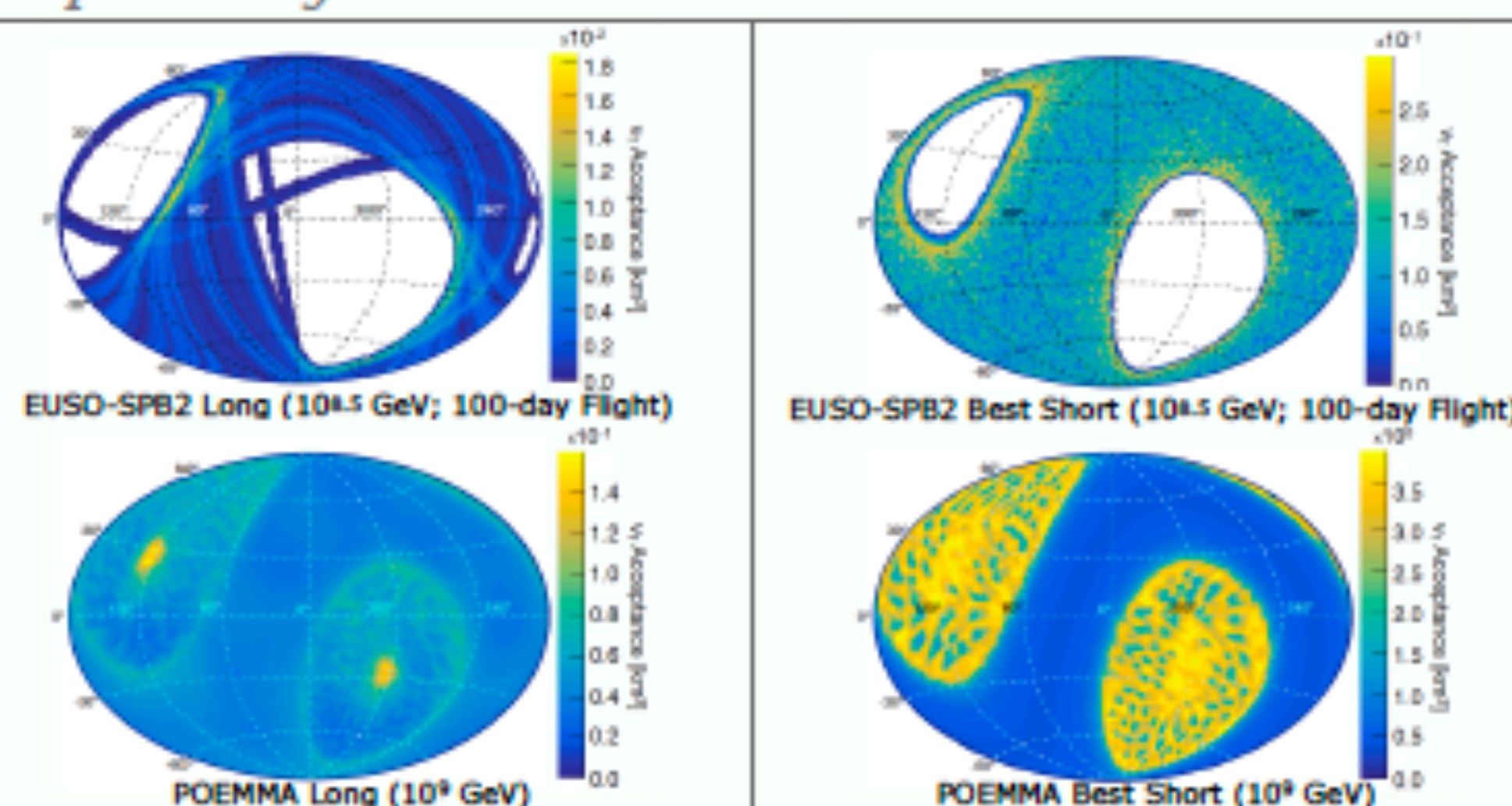
$$N_{\text{ev}} = \int_{\Delta E} \phi_\nu(E_\nu, z) \langle A(E_\nu) \rangle_{T_{\text{obs}}} dE_\nu$$

$$\phi_\nu(E_\nu, z) = \text{at-Earth } \nu \text{ fluence}$$

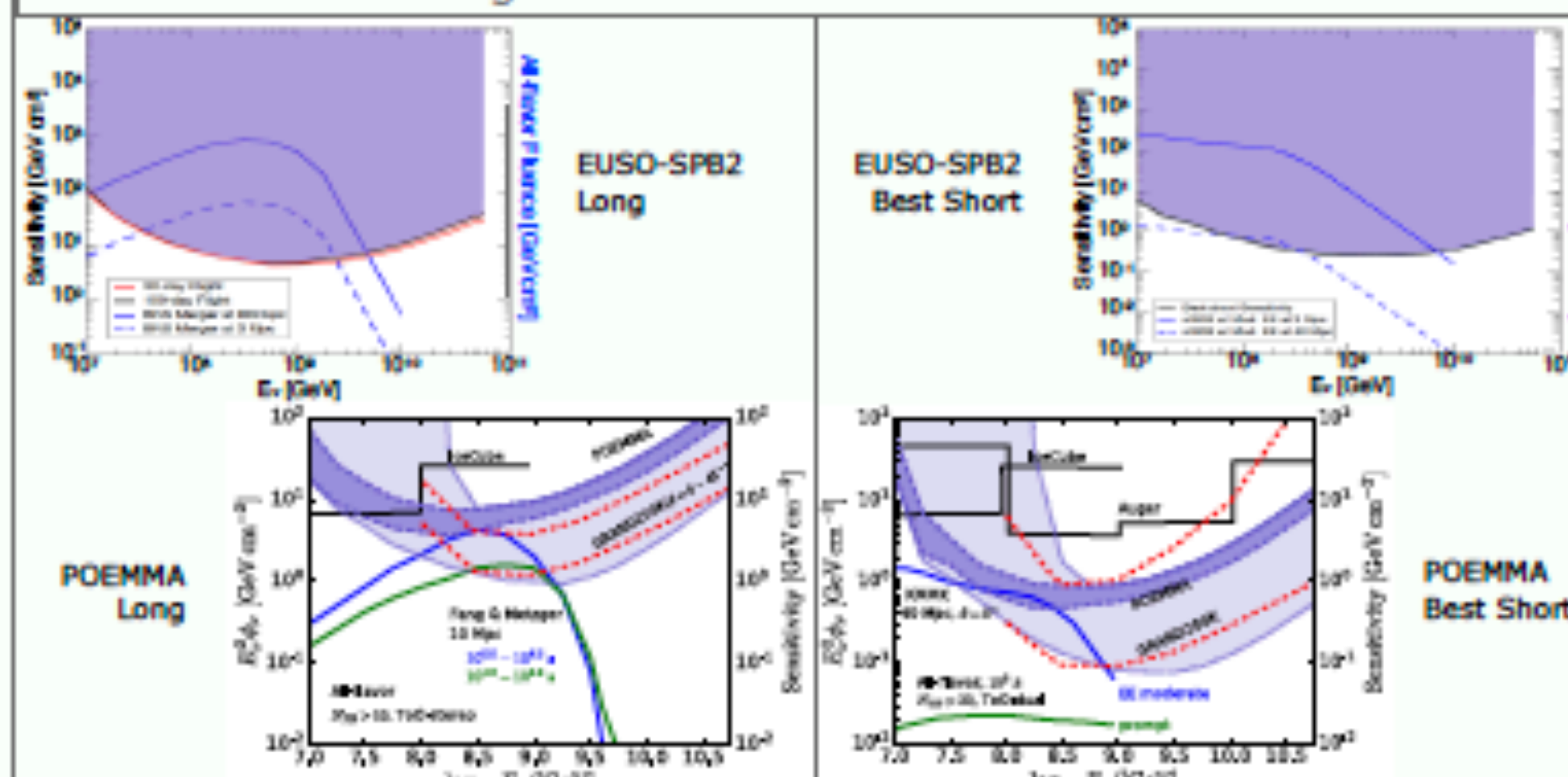


## Results

### Acceptance Sky Plots

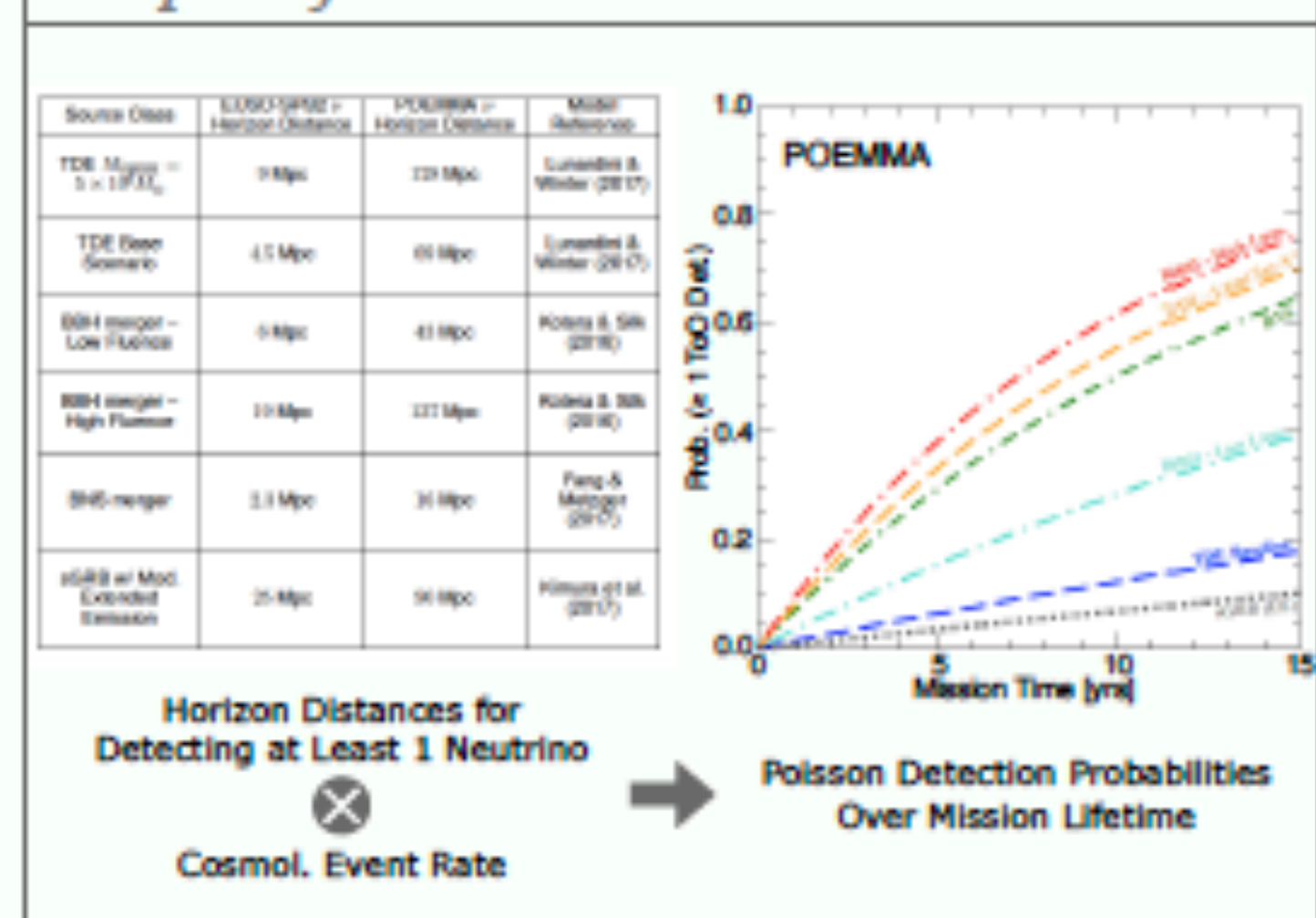


### Transient Sensitivity



## Results (cont.)

### Prospects for ToO Detection



## Conclusions

- Most promising candidate astrophysical neutrino sources are tidal disruption events (TDEs), binary neutron star (BNS) mergers, and binary black hole (BBH) mergers.
- Both POEMMA and EUSO-SPB2 will be able to detect these sources out to well beyond the Galaxy.
- Prospects for detecting a ToO are promising for POEMMA.
- ToO studies to be included in vSpaceSim neutrino simulation package.

## References

- [1] The POEMMA Collab., 2021, JCAP, 06, 007
- [2] Eser, J., Olinto, A. V., & Wiencke, L., et al., 2021, PoS (ICRC21), 404
- [3] Reno, M. H., Venters, T. M., & Krizmanic, J. F., et al., 2021, PoS (ICRC21), 1201
- [4] Krizmanic, J. F., et al., 2021, PoS (ICRC21), 1205
- [5] Venters, T. M., et al., 2020, PRD, 102, 123013
- [6] Reno, M. H., Venters, T. M., & Krizmanic, J. F., 2019, 100, 063010

Author Affiliations:

<sup>1</sup>NASA Goddard Space Flight Center, <sup>2</sup>University of Iowa, <sup>3</sup>UMBC/CRESST